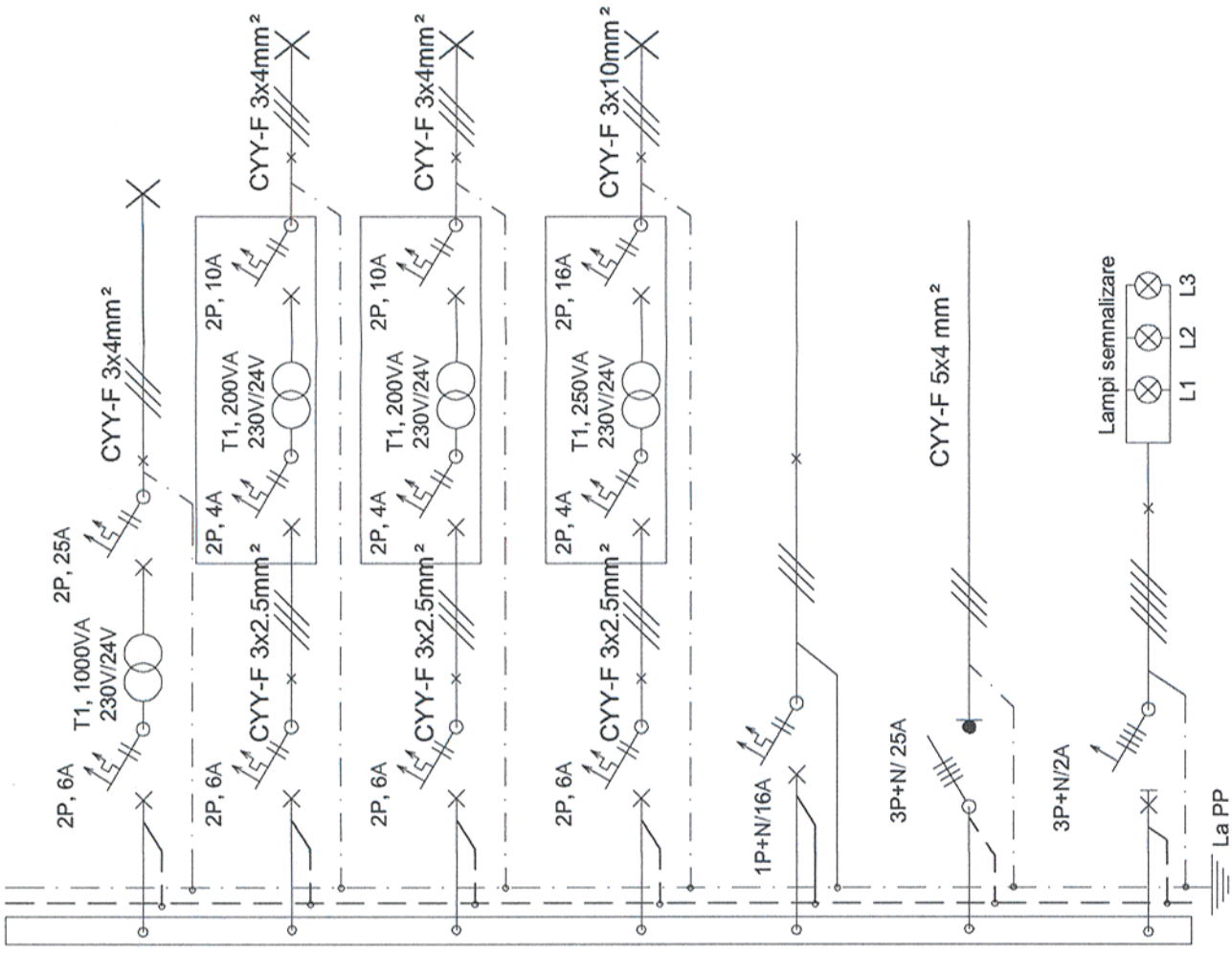


**SCHEMĂ MONOFILARĂ TABLOU ELECTRIC TES/  
MONOFILAR ELECTRICAL SCHEME FOR TES ELECTRIC PANEL**

Acest plan anulează și înlocuiește planul nr. PT.03.03.26.IE.06.014  
elaborat la data 01.2013.  
This layout plan canceled and replaced layout plan no. PT.03.03.26.IE.06.014  
prepared on 01.2013.

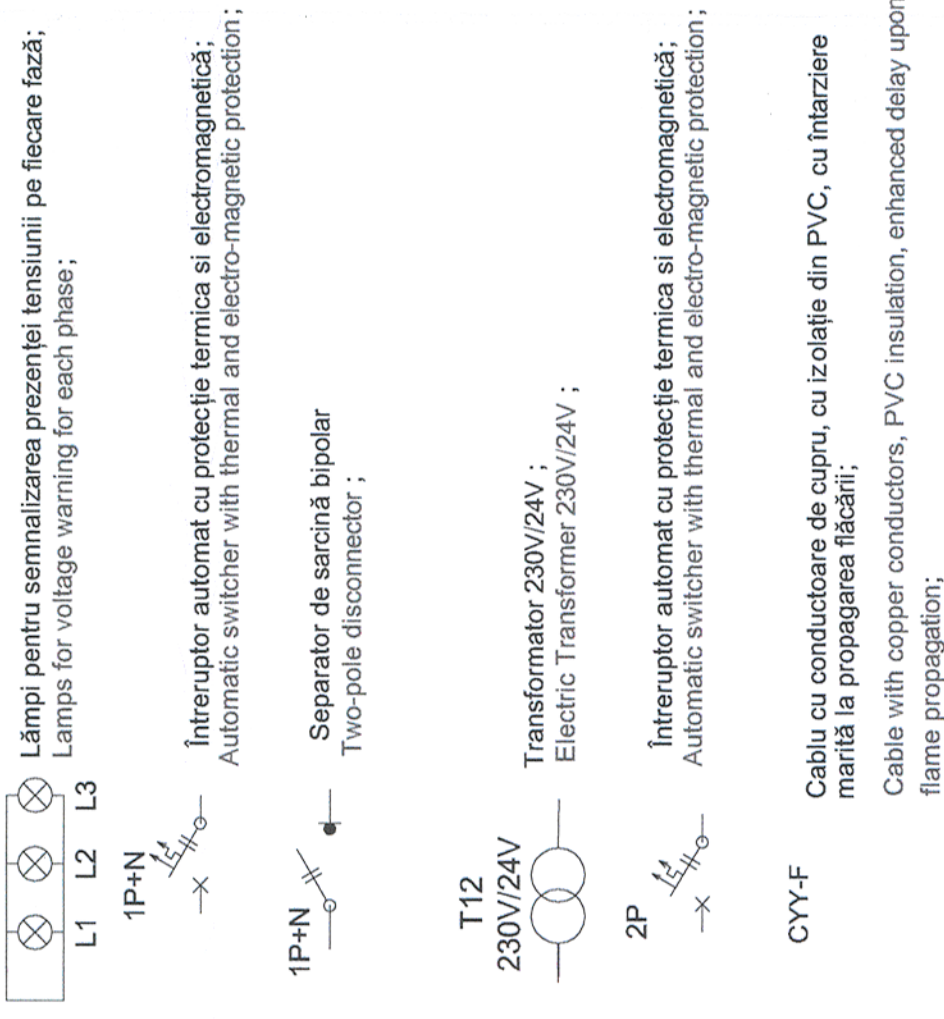
**TES**

$P_i = 2,620 \text{ kW}$ $P_a = 2,620 \text{ kW}$ $I_c = 11,9 \text{ A}$	$U_n = 230 \text{ V.c.a}$ $\cos\phi = 0,84$ $C_s = 1$
--	---



Circ.	Nr. rec. LL/LP	Pi [kW]	Pi [kW]			Ic	Observații/ Observations
			L1	L2	L3		
C1	2LL	0.14	0.14	-	-	6.03	Iluminat subsol Basement Lighting
C2	2LL	0.14	-	0.14	-	6.03	Iluminat subsol Basement Lighting
C3	2LL	0.14	-	-	0.14	6.03	Iluminat subsol Basement Lighting
C4	3LL	0.21	0.21	-	-	9.05	Iluminat subsol Basement Lighting
C5	-	2.0	-	2.0	-	10.87	Rezerva Reserve
-	$\Sigma Pi =$	2.62	0.34	2.14	0.14	11.99	Alimentare Tablou din TEP Electric panel supply from TEP

**LEGENDĂ / LEGEND:**



**Notă/ Note:**  
 Schemele monofilare se vor consulta împreună cu planurile de a atrage atenția proiectantului, altfel executantul va fi responsabil pentru acestea.  
 The single-wire diagrams will be read together with the layouts plans. The contractor has to draw the attention of the designer with regard to any error or incongruity encountered, otherwise the contractor will be responsible for it.

						Data Date 01.2013 01.2013	Semnătura Signature 
Verificator / Expert Checker / Expert		Cerință / Requirement Semnătura / Signature					
Subcontractant / Subcontractor		Șef de echipă / Team leader C. Teodorescu		Verificat / Checked D.A. Stănescu		Data Date 01.2013 01.2013	
Aprobat / Approved A.M. Baicu		Proiectat / Designed M. Ciocirlan		Subcontractant / Subcontractor <b>MIOTOP</b>		Data Date 01.2013 01.2013	
Denumire desen / Drawing name: Schemă monofilară tablou TES - Regulator circulație Deva Deva Traffic Controller Building - Unifilar diagram for TES panel		"Reabilitarea liniei c.f. Frontieră - Curtici - Simeria, parte componentă a coridorului IV Pan - European pentru circulația trenurilor cu viteză maximă de 160 km/h" Tronsoanel 3: Gurasada - Simeria "Rehabilitation of the Railway Line Border - Curtici - Simeria, component Part of the IV Pan - European Corridor for the Trains Circulation with maximum speed of 160 km/h" Section 3: Gurasada - Simeria		Project 9i 35311.1		Faza / Phase: PTh+CS / TD+TS	
Scara / Scale -	Revizia / Revision 1/05.2013	Cod desen / Drawing Code PT.03.03.26.IE.06.017	Nr / No 17/24				